

SURVEY INSTRUMENT:

SOKKIA AUTO LEVEL:



Fast, easy-to-use and accurate, the **SOKKIA AUTOMATIC LEVELS** are suited for the everyday job site. Each level is easy to set up, simple to sight and resistant to vibration, shock and other environmental conditions.

LEICA DIGITAL LEVEL:



Fast, easy-to-use and accurate, the **LEICA DIGITAL LEVELS** are suited for the everyday job site. Each level is easy to set up, simple to sight and resistant to vibration, shock and other environmental conditions.

SOKKIA TOTAL STATION:



The total station chosen for this project is a **Sokkia CX55**. This total station is capable of simultaneously measuring both horizontal and vertical angles as well as measuring the distance to a reflective target. It can then reduce this information into plain coordinate points having an X, Y and Z value. All of these calculations are carried out onboard the total station itself.

Up for auction is a **Sokkia CX55** total station in perfect working condition. It comes in the original hard shell case with instruction manual, plum bob, transfer, cable, USB, charger and battery. This unit is in perfect working condition.

Sokkia CX55 Total Station Specs!

SOKKIA TOTAL STATION:



The total station chosen for this project is a **Sokkia CX65**. This total station is capable of simultaneously measuring both horizontal and vertical angles as well as measuring the distance to a reflective target. It can then reduce this information into plain coordinate points having an X, Y and Z value. All of these calculations are carried out onboard the total station itself. Up for auction is a **Sokkia CX65** total station in perfect working condition. It comes in the original hard shell case with instruction manual, plum bob, transfer, cable, USB, charger and battery. This unit is in perfect working condition.

Sokkia CX65 Total Station Specs!

TOPCON TOTAL STATION:



The total station chosen for this project is a **Topcon ES-55**. This total station is capable of simultaneously measuring both horizontal and vertical angles as well as measuring the distance to a reflective target. It can then reduce this information into plain coordinate points having an X, Y and Z value. All of these calculations are carried out onboard the total station itself. Up for auction is a **Topcon ES-55** total station in perfect working condition. It comes in the original hard shell case with instruction manual, plum bob, transfer, cable, USB, charger and battery. This unit is in perfect working condition.

Topcon ES-55 Total Station Specs!

LEICA TOTAL STATION:



The perfect solution for all sites

Rugged, adaptable total station with accurate angle measurements, dual-axis compensator, powerful EDM, data output in any format, and application programs for surveying and engineering. Advanced Leica technology at a reasonable price. The TS06 series is specifically designed for the construction site. They are very easy to use and impress by a high level of functionality. It requires minimum time to learn operating the TS06.

Distance measurement

With 1 circular prism GPR1 - 3500 m

With reflective of oil - 250 m

Standard deviation - ± 5 mm + 2 ppm

Measuring time - >0.5 seconds.

HANDHELD GPS:



Surveyors use GPS technology for simple tasks (such as defining property Lines) or for complex tasks (such as building infrastructures in urban Centers). Locating a precise point of reference used to be very time-consuming. With GPS technology, two people can survey dozens of Control points in an hour. Surveying and mapping roads and rail systems can also be accomplished from mobile platforms to save time and money. GPS technology helps with marine navigation, traffic routing, underwater Surveying, navigational hazard location, and mapping. Commercial fishing Fleets use it to navigate to optimum fishing locations and to track fish Migrations.

LEICA DGPS:



Measurement precision and accuracy in position and accuracy in height are dependent upon various factors including number of satellites, geometry, observation time, ephemeris accuracy, ionosphere conditions, multipath etc. Figures quoted assume normal to favorable conditions. Times can also not be quoted exactly. Times required are dependent upon various factors including number of satellites, geometry, ionosphere conditions, multipath etc.

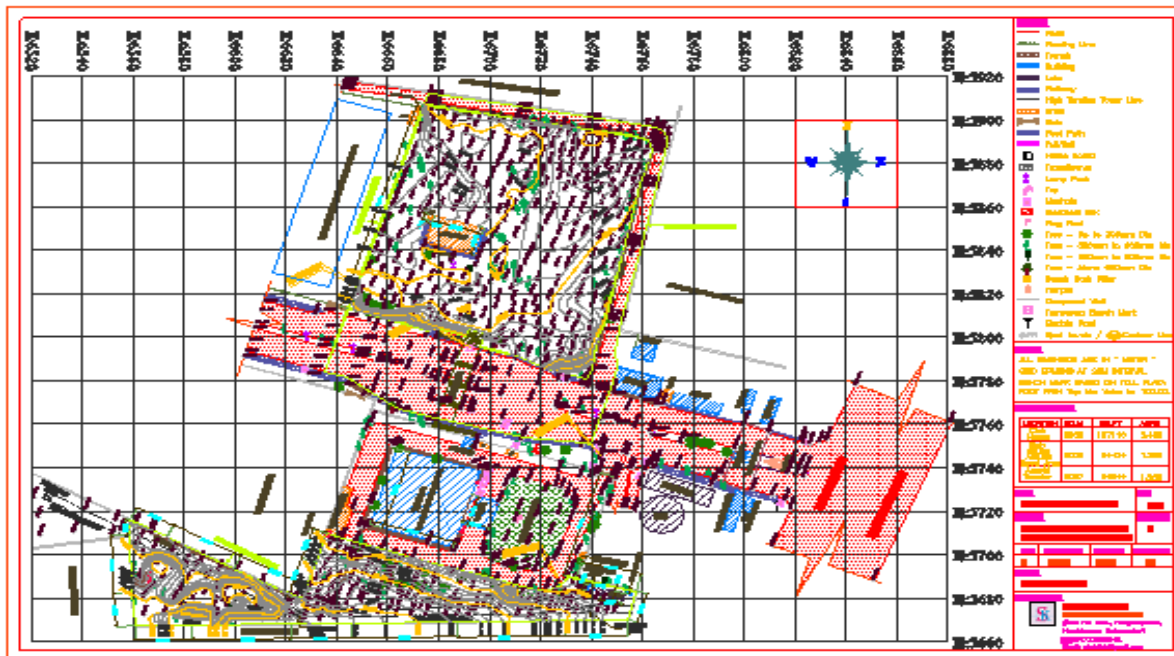
PRIMARY EQUIPMENTS:

DGPS	-	2 No's
TOTAL STATION – LEICA	-	2 No's
TOTAL STATION – SOKKIA	-	2 No's
TOTAL STATION – TOPCON	-	3 No's
AUTO LEVEL	-	2 No's
HAND GPS	-	2 No's
ROADOMETER	-	2 no's

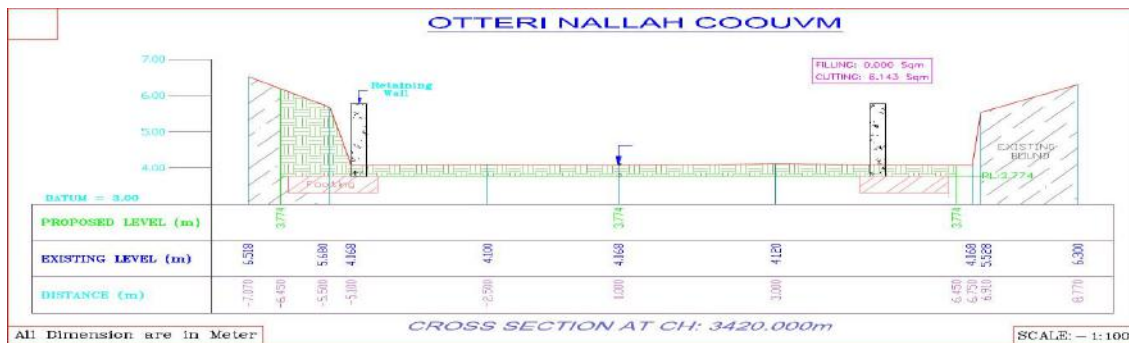
SOFTWARE FACILITY (IN) CTS:

Auto Cad	2015
Auto plotter	6
Civil 3d (Contour Platting & 3d Mapping Software)	
FORTTRAN (High ways, Railways Design Programs)	
CS Data Export (Contour & LS, CS Plotting Software)	
ESurvey Cad 10.20.	
Auto Cad Auto Lisp (VBA).	

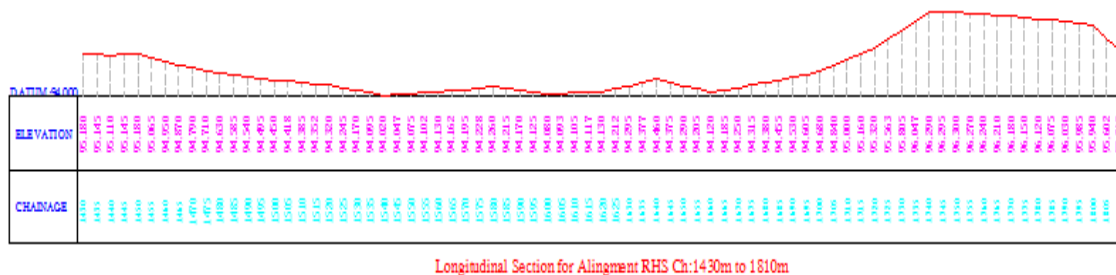
TOPOGRAPHICAL & CONTOUR DRAWING:



CROSS SECTION DRAWING:



LONGITUDINAL SECTION DRAWING:



Longitudinal Section for Alignment RHS Ch:1430m to 1810m

LS SCALE =
 HORI - 1:1000
 VERT - 1:100

